



OBSERVATÓRIO  
SAGITÁRIO

09/02/2006

# Bright lunar rays Project

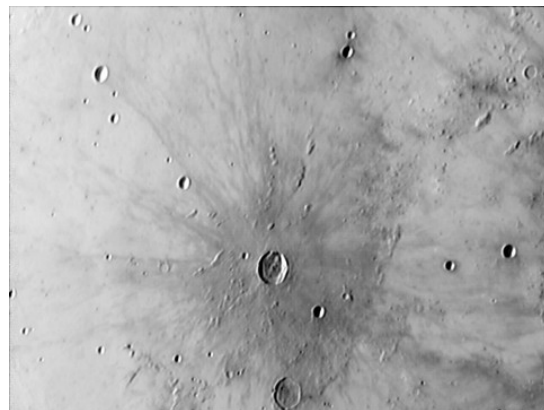
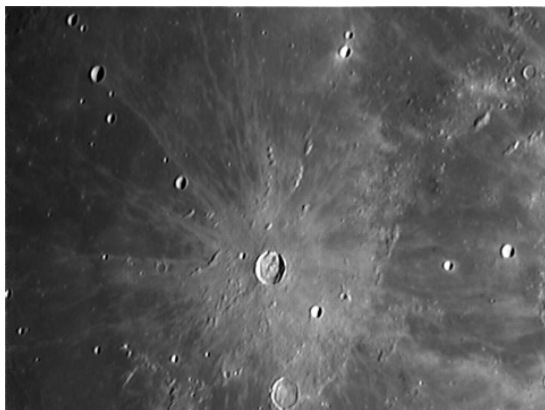
**Present the small contribution to study of lunar rays.**

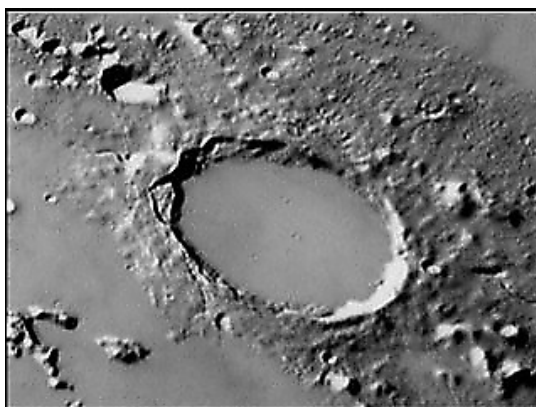
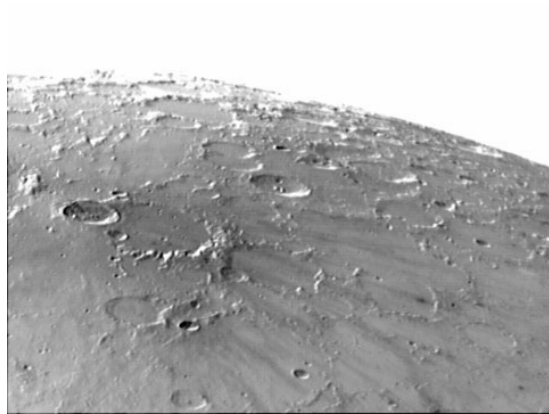
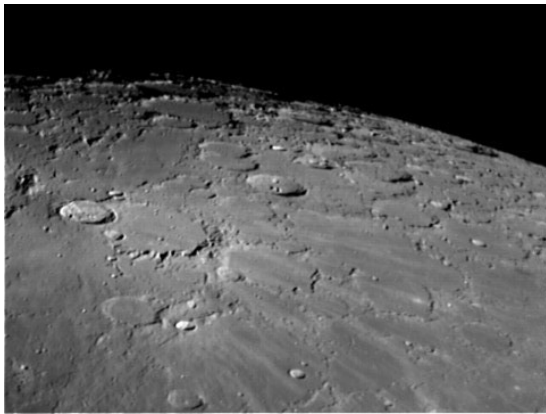
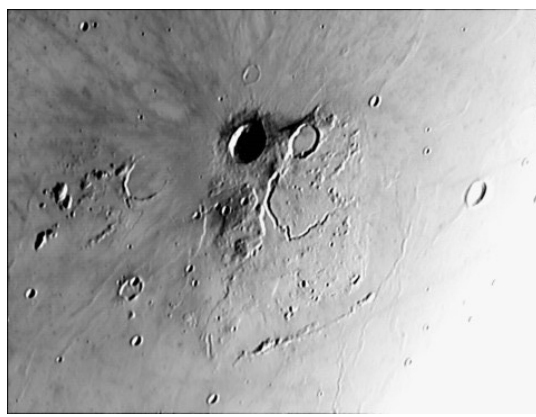
**I am quite surely that this idea is not new and all of digital imagers use some time the negative option of any processing image programs or images view, like Microsoft Photo Editor that I use to see my images results.**

**Using negative images a lot of information can be see and increase a lot our perception of lunar rays and will be very helpfully on dome investigation ,banded craters, etc**

**Remember that the shroud of Turim negative images shows a lot of information , not showing on positive image.**

**Bellow some examples how the details are increased:**





**I hope our fellows can enjoy my small contribution to the program.**

**Guilherme Grassmann  
Americana, Brasil**

